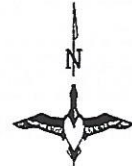
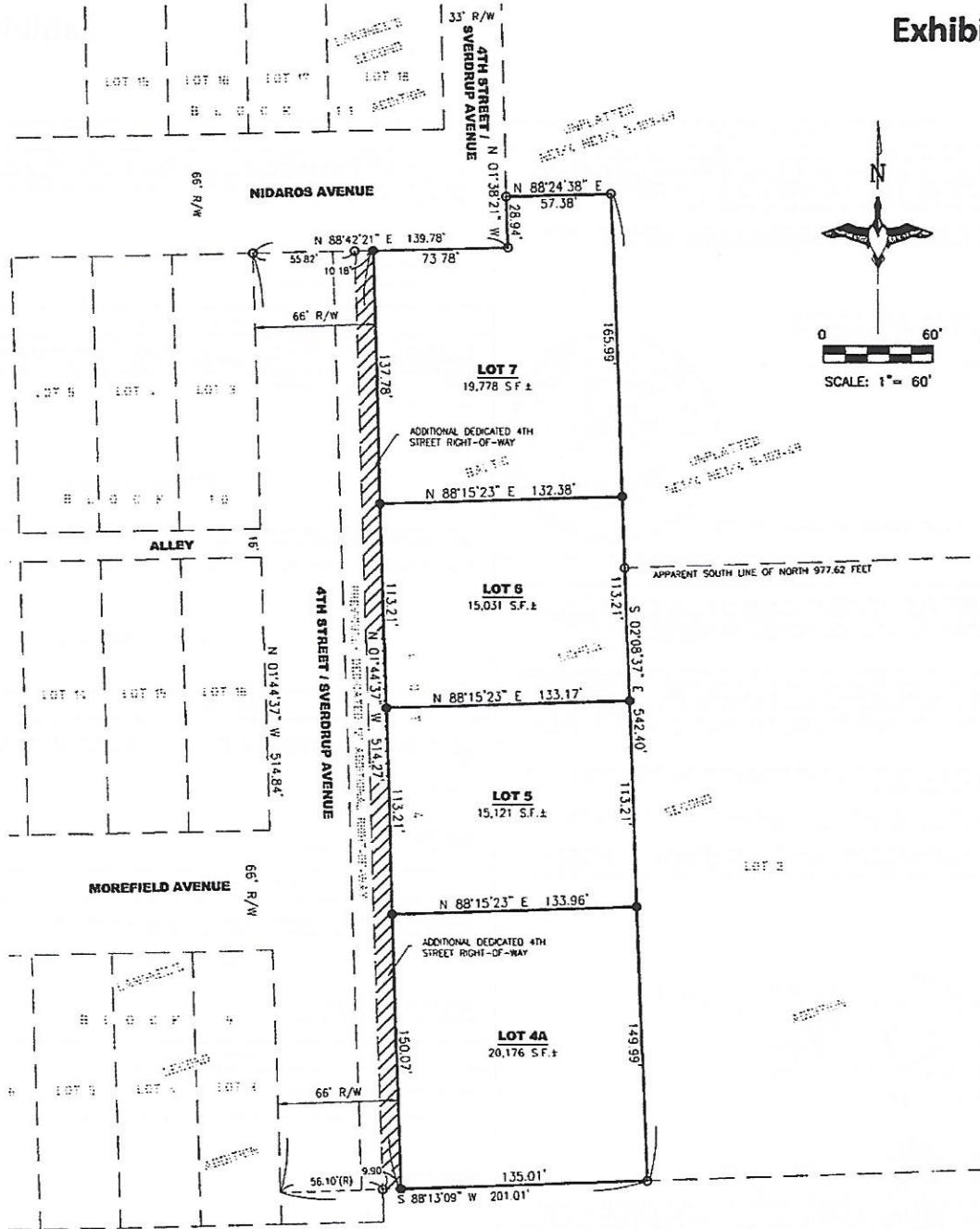


# PLAT OF LOTS 4A, 5, 6 AND 7 OF BALTIC SCHOOL SECOND ADDITION

AN ADDITION TO THE CITY OF BALTIC, MINNEHAHA COUNTY, SOUTH DAKOTA.

Exhibit 1



0 60'  
SCALE: 1" = 60'

**LEGEND:**

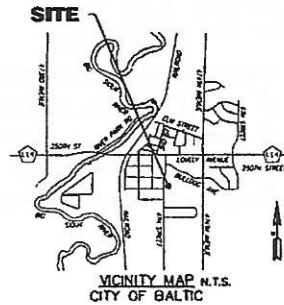
- SET 5/8" REBAR W/CAP #12913
- FOUND MONUMENT
- △ SECTION CORNER (AS NOTED)
- (R) RECORD INFORMATION
- (M) MEASURED DISTANCE
- AC. ACRES
- S.F. SQUARE FEET
- A.E. ACCESS EASEMENT
- R/W RIGHT-OF-WAY
- PREVIOUSLY PLATTED LINE
- - - RIGHT OF WAY LINE
- R.M.C. RECORDS OF MINNEHAHA COUNTY
- N.T.S. NOT TO SCALE



PREPARED BY:

**Midwest**  
Land Surveying, Inc.

Land Surveying and GPS Consulting  
211 E. 14th Street Suite 100  
Sioux Falls, South Dakota 57104  
Phone: (605) 339-8901 FAX: (605) 274-8951



NOTES:  
BASIS OF BEARINGS IS UTM ZONE 14  
THIS PLAT WAS PREPARED WITHOUT THE  
BENEFIT OF A TITLE COMMITMENT.